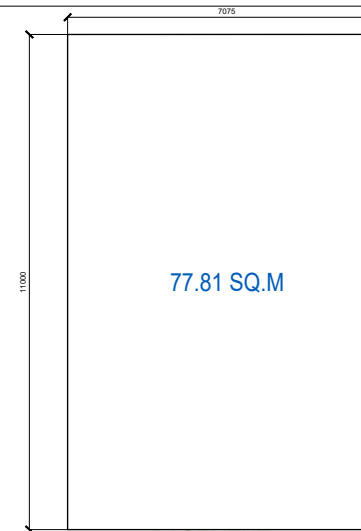
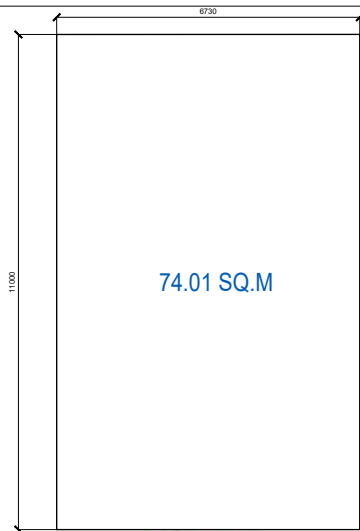


PLOT 53/14

PLOT 53/13

PLOT 53/12

PLOT 53/11

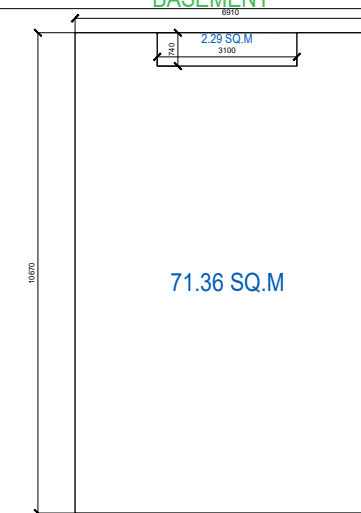
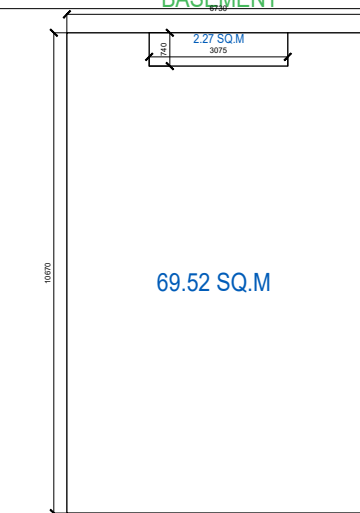
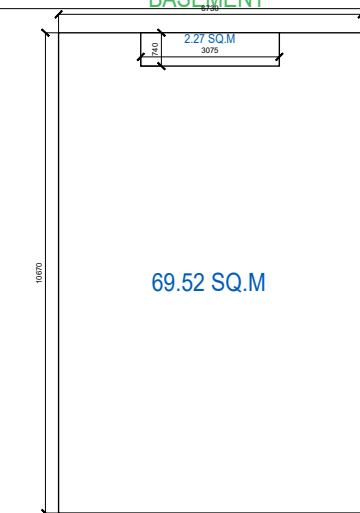
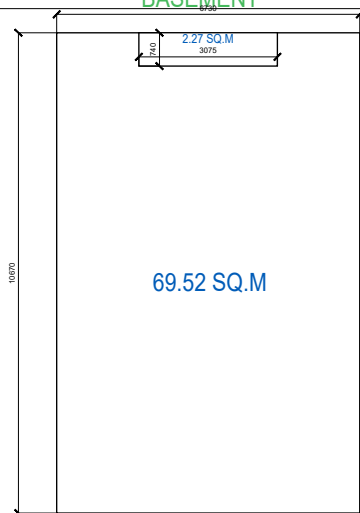


BASEMENT

BASEMENT

BASEMENT

BASEMENT

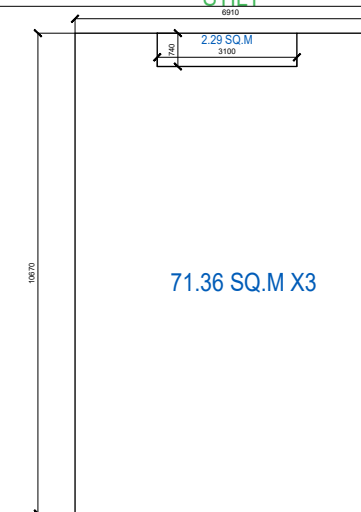
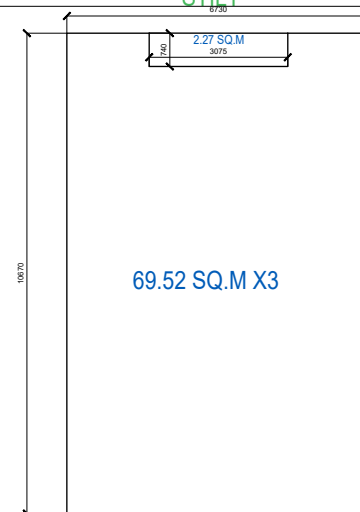
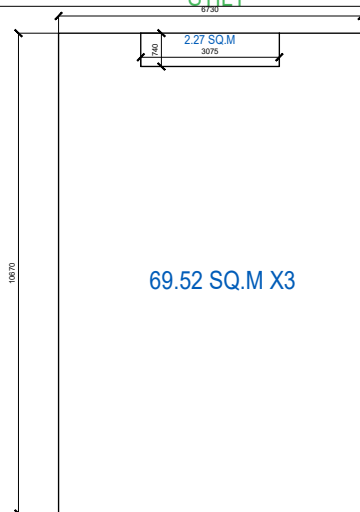
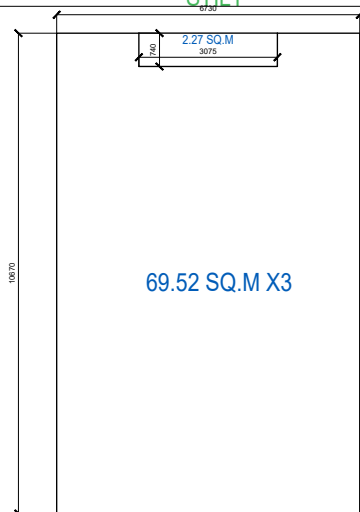


STILT

STILT

STILT

STILT

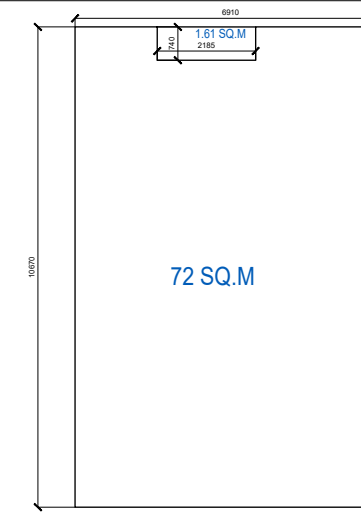
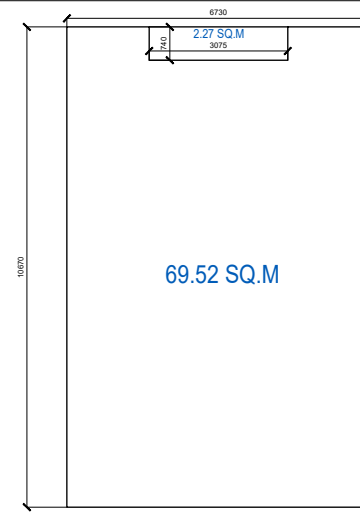
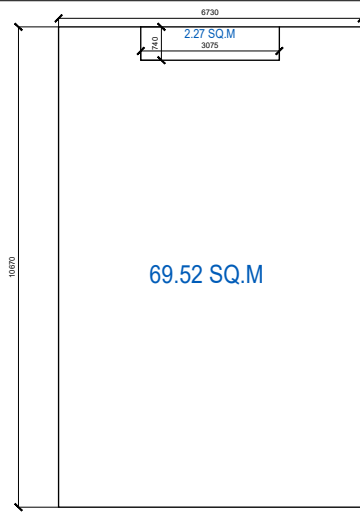
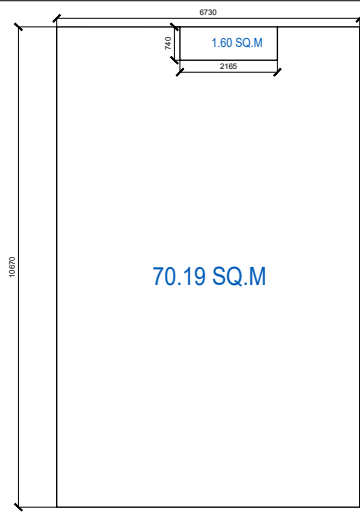


TYPICAL FLOOR(FIRST+SECOND+THIRD)

TYPICAL FLOOR(FIRST+SECOND+THIRD)

TYPICAL FLOOR(FIRST+SECOND+THIRD)

TYPICAL FLOOR(FIRST+SECOND+THIRD)

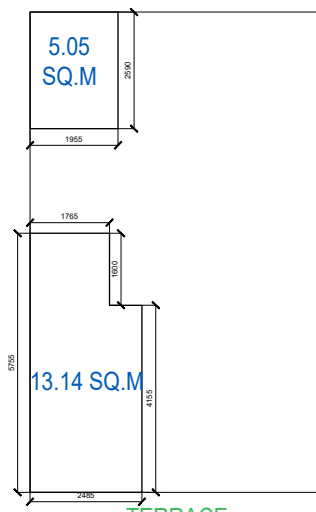
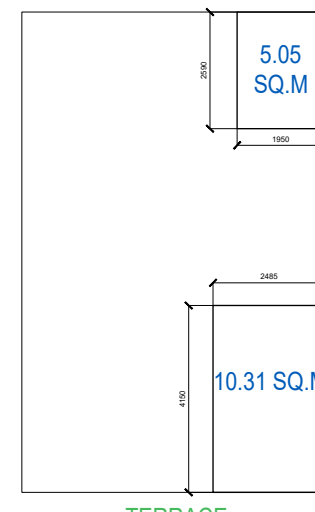
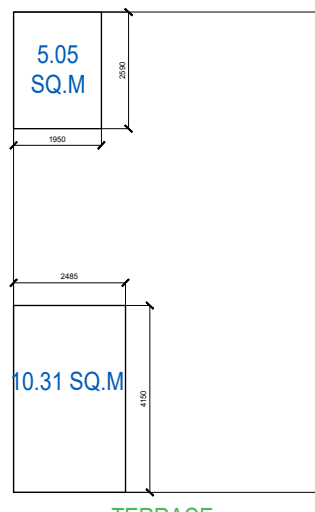
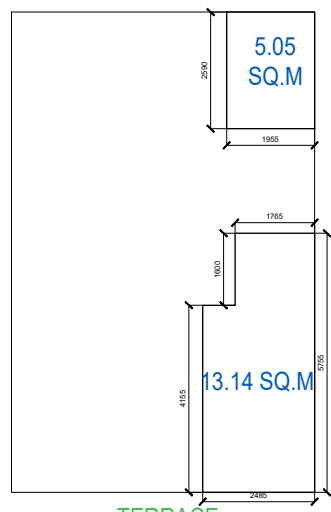


FOURTH FLOOR

FOURTH FLOOR

FOURTH FLOOR

FOURTH FLOOR



TERRACE

TERRACE

TERRACE

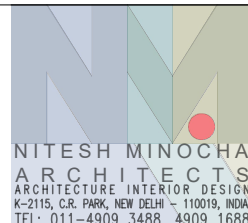
TERRACE

TOTAL BUILT-UP AREA IN PLOT 53/14 =
(BASEMENT+STILT+TYPICAL+FOURTH+TERRACE)
= 74.01+69.52+208.56+70.19+5.05+13.14
= 440.47 SQ.M

TOTAL BUILT-UP AREA IN PLOT 53/13 =
(BASEMENT+STILT+TYPICAL+FOURTH+TERRACE)
= 74.01+69.52+208.56+69.52+5.05+10.31
= 436.97 SQ.M

TOTAL BUILT-UP AREA IN PLOT 53/12 =
(BASEMENT+STILT+TYPICAL+FOURTH+TERRACE)
= 74.01+69.52+208.56+69.52+5.05+10.31
= 436.97 SQ.M

TOTAL BUILT-UP AREA IN PLOT 53/11 =
(BASEMENT+STILT+TYPICAL+FOURTH+TERRACE)
= 77.81+71.36+214.08+72+5.05+13.14
= 453.44 SQ.M



PROJECT
STAFF RESIDENCE FOR SET ON PLOTS 53/11,12,13,14 AT RAJENDER NAGAR

DWG. TITLE
BUILT-UP AREA STATEMENT

Notes :-
1. All dimensions are in mm.
2. Dimensions are to be read and not measured
3. Any discrepancy in the drawing should be brought to the notice of the architect and no deviation should be made without the approval of the architect.
4. The dwgs. are the copyright of the architect and should not be used for any unauthorised reason.
5. All beams, columns, slab sizes and reinforcement details are as per structural drawings.
6. All dimensions are finished dimensions unless mentioned and tolerances for plaster finishing have to be left as reqd.

DWG. NO NMA-SSR-AS-001-R1	
FILE	R0_SSR_ARCHITECTURAL_SET
DATE	22_03_2023
DEALT BY	SURYA
SCALE	NTS